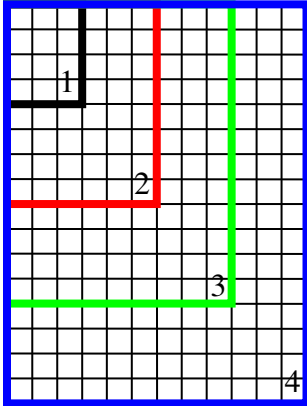


Perimeter and Area of Similar Figures Investigation
 Lesson 8-6



For each of the four rectangles above, find the perimeter and area:

Rectangle	Perimeter	Area
1 (black)		
2 (red)		
3 (green)		
4 (blue)		

Use the information in the first chart to complete the following:

Rectangle	Similarity Ratio	Ratio of Perimeters	Ratio of Areas
2 to 1			
3 to 1			
4 to 1			

Form a conjecture about how the ratios of perimeters for similar figures compare to their SR:

Form a conjecture about how the ratios of areas for similar figures compare to their SR: